

Comparative study

Introduction: My comparative study focuses on three artists from different time periods and art movements. I compare the technical aspects and artworks of Jose Posada, Frida Kahlo, as well as a local artist, Miranda J. Petroviak.

Jose Posada - Formal Response



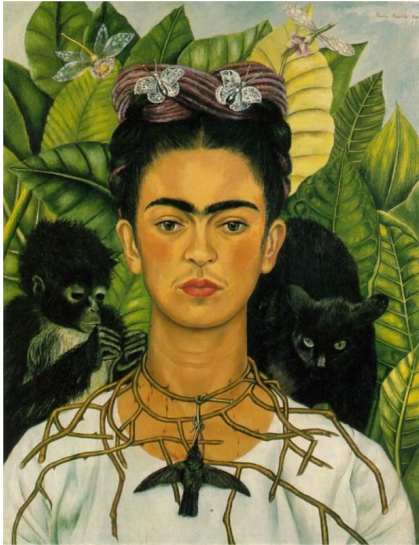
Calavera Oaxaqueña published in 1910

The first thing I noticed within this print was the use of line to show movement. The line use emphasizes the symbolism and emotion within his prints. The dark hat makes the skeleton in the middle a focal point. The knife covered in blood shows violence or war; however the skeleton's facial expression shows that he is proud.

Cultural Response of Jose Posada's

This print is of a skeleton dressed in a traditional mexican cowboy outfit holding a machete. The skeleton is surrounded by other skeletons and skulls, which connect to the Mexican holiday, Day of the Dead.

Frida Kahlo - Formal Response



Self-Portrait with a
Thorn Necklace and
Hummingbird, 1940

“I paint my own reality” - Frida Kahlo

One of the first things I noticed within this piece was the contrast between the bright and dark colors. They emphasize the dramatic symbolism shown within all of her paintings. The bright colors used come from the traditional use of color in indigenous Mexican art. The bold dark colors emphasize her unibrow, eyes, hair, and creatures making her appear calm. The peach-pink tone under the eyes creates a feeling of sadness. Additionally, the artwork is very balanced vertically making the focal point on the face.

Cultural Response of Frida Kahlo's Self-Portrait

Frida Kahlo's "Self-Portrait with a Thorn Necklace and Hummingbird" was painted to portray her feelings towards the divorce with her husband, Diego Rivera. Around her neck is a thorn necklace which is similar to Christ's crown of thorns. She is presenting herself as a Christian. The thorns that are cutting into her neck symbolize her pain from her husband having a love affair with her sister. Hanging from the necklace is a dead hummingbird which in Mexican folk tradition it is used as a charm to bring luck in love. Behind her is a black cat, which symbolizes bad luck and the pet monkey was gifted to her by Diego which is a symbol for the devil. She includes these to show her bad luck in life and life. Lastly, the butterflies above her head symbolize the Resurrection, and being able to overcome feeling dead.

Miranda J. Petroviak - Formal Response



“My art is a mere portal into a surreal world in which I reside.” - Petroviak

This first thing I noticed within this piece was the floral background and women blending into it. She uses a contrast on dark and bright colors. The pink tone on her cheek bones and the light colors within her face show confidence.

“Miss Priss” 2014 oil on fabric
50.8 cm x 40.64 cm

Cultural Response

Local Artist -

Comparing and Contrasting Application Of Medium



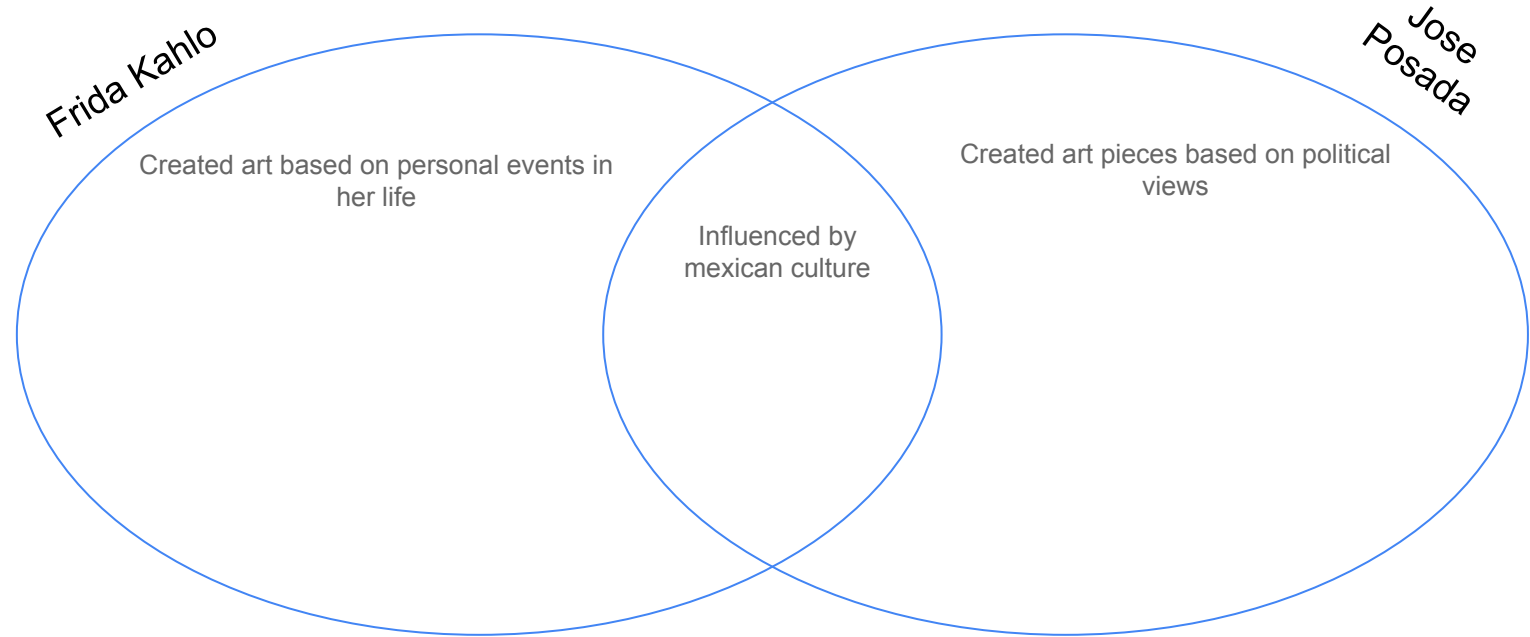
Frida Kahlo "Self-Portrait with a Thorn Necklace and Hummingbird"

Miranda J Petroviak "Miss Priss"



The application of media for both pieces of art is oil paint; however Kahlo's "Self-Portrait with a thorn Necklace and Hummingbird" is painted on canvas, while Petroviak's "Miss priss is painted on fabric. Both pieces have nature backgrounds and focus on the use of contrast between light and dark colors to create a focal point of a women. Kahlo's nature background is more calm because of her use of dull green and yellow colors, while Petroviak's nature background is more vibrant because of her use of white and pink colors. These self-portraits portray different feelings based on the use of color. Kahlo's use of dark colors under the eyes show a feeling of sadness, while Petroviak used bright colors to show a feeling of confidence.

Compare and Contrast



Evaluation on Application of Medium

Frida Kahlo - "Self-Portrait with a Thorn Necklace and Hummingbird"

- Oil paint on canvas
- Small size of 51.8 cm by 60.9 cm
- Focus on contrast of color

Jose Posada - "Calavera Oaxaqueña"

- Print on white fabric
- Small size 21.3 cm by 33.8 cm
- Focus on line

Miranda Petroviak - "Miss Priss"

- Oil paint on fabric
- Small size 50.8 cm by 40.64 cm
- Focus on contrast of dark and light colors

Evaluation on Expression of Emotion

Frida Kahlo -

- Color scheme suggests sadness or pain
- Dark animals surrounding her express an evil presence
- Self-portrait suggests a personal expression of her feelings about an event in her life

Jose Posada -

- Use of lines suggests commotion
- Knife covered in blood shows violence
- Political print suggests a personal expression of his feeling towards an event he experienced

Miranda Petroviak -

- Bright colors within the face show confidence
- Self-Portrait suggest a personal expression of how she views herself
- Color scheme puts a focal point on the the women

Inspirations

Frida Kahlo -

- Surrealist Movement
- Indigenous Mexican Culture
- Personal Events

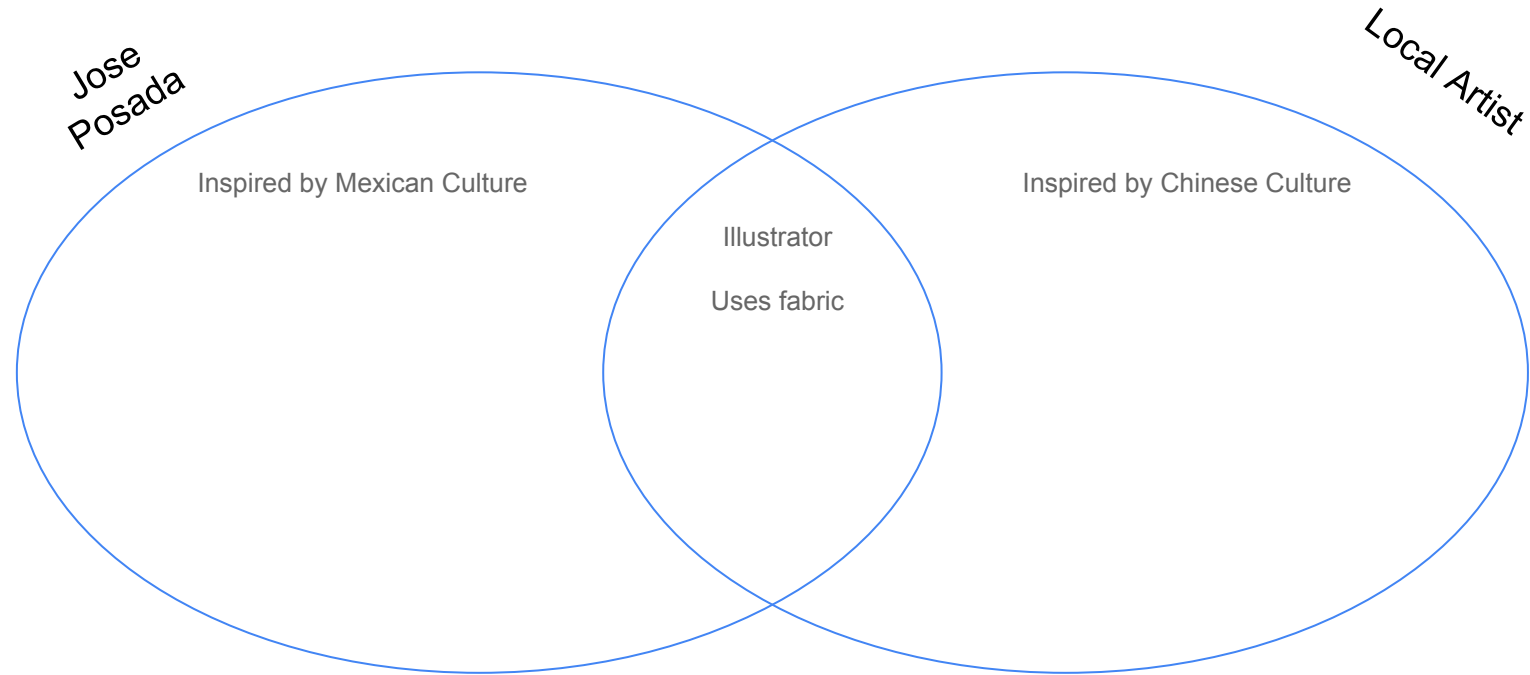
Jose Posada -

- Mexican Modern Art
- Latin American
- Cartoonists
- Political Events

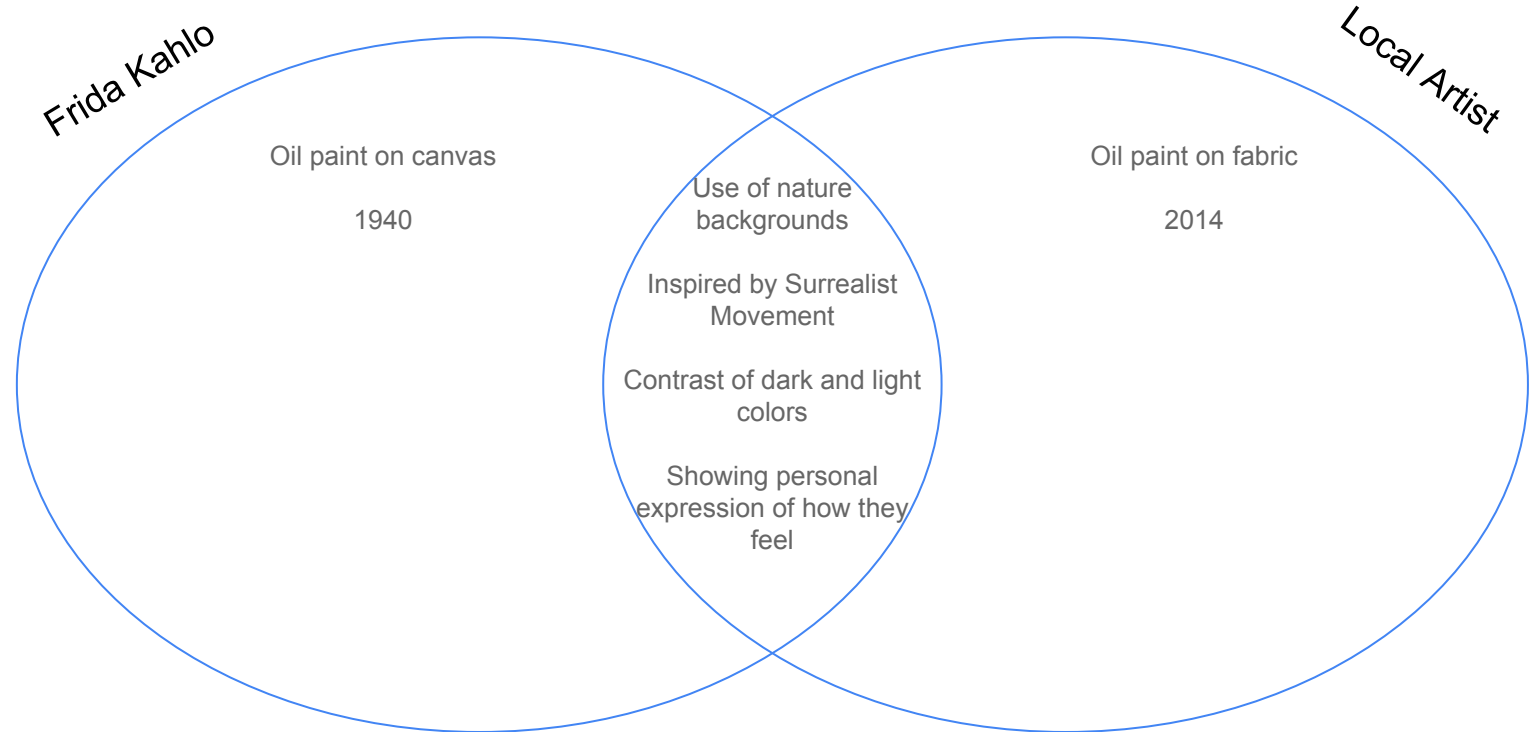
Miranda Petroviak -

- Surrealist Movement
- Pop-Surrealist Movement
- Children's Books
- Japanese Culture
- Science Fiction
- Indie Rock
- Alternative Music

Compare and Contrast



Compare and Contrast



Connection to Own Art

Connection to Own Art

Connection to Own Art

Connection to Own Art

Connection to Own Art

Bibliography

<http://www.fridakahlo.org/self-portrait-with-thorn-necklace-and-hummingbird.jsp>

<http://www.fridakahlofans.com/c0350.html>

<https://tardischild.wordpress.com/2008/02/24/self-portrait-with-thorn-necklace-hummingbird-and-unibrow/>

<http://www.rawartists.org/atelierdemir>

<http://www.openculture.com/2014/11/the-classic-skeleton-art-of-jose-guadalupe-posada.html>